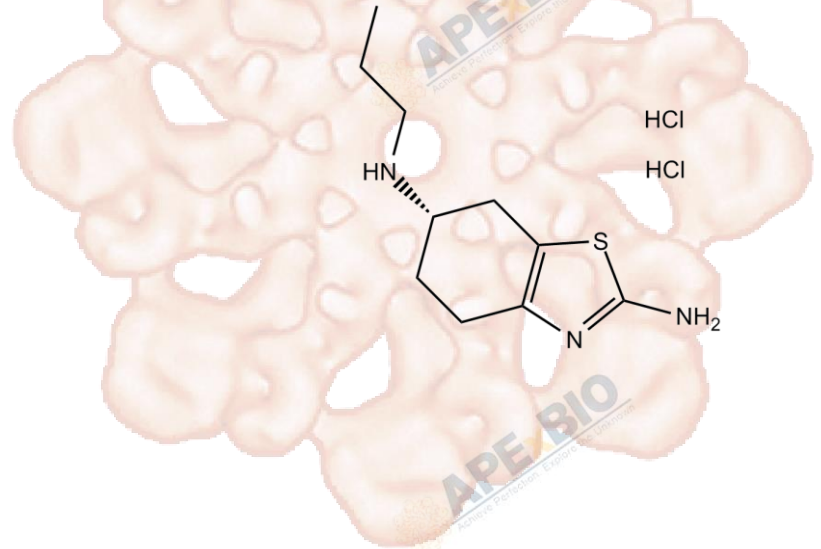


Product Data Sheet

Pramipexole dihydrochloride

Cat. No.:	A3733
CAS No.:	104632-25-9
Formula:	C10H19Cl2N3S
M.Wt:	284.25
Synonyms:	
Target:	Neuroscience
Pathway:	Dopamine Receptor
Storage:	Store at -20°C



Solvent & Solubility

≥ 105.2 mg/mL in H₂O; ≥ 14.21 mg/mL in DMSO; ≥ 3.43 mg/mL in EtOH with gentle warming and ultrasonic

In Vitro

Preparing Stock Solutions	Solvent	Mass	1mg	5mg	10mg
			Concentration		
	1 mM		3.5180 mL	17.5901 mL	35.1803 mL
	5 mM		0.7036 mL	3.5180 mL	7.0361 mL
	10 mM		0.3518 mL	1.7590 mL	3.5180 mL

Please refer to the solubility information to select the appropriate solvent.

Biological Activity

Shortsummary

Dopamine receptor agonist

IC₅₀ & Target

In Vitro

Cell Viability Assay

Preparation method:

In Vivo

Animal experiment

Applications:

Product Citations

1. Meneely S, Dinkins ML, et al. "Differential Dopamine D1 and D3 Receptor Modulation and Expression in the Spinal Cord of Two Mouse Models of Restless Legs Syndrome." Front Behav Neurosci. 2018 Sep 4;12:199.PMID:30233336

See more customer validations on www.apexbt.com.

References

Caution

FOR RESEARCH PURPOSES ONLY.

NOT FOR HUMAN, VETERINARY DIAGNOSTIC OR THERAPEUTIC USE.

Specific storage and handling information for each product is indicated on the product datasheet. Most APExBIO products are stable under the recommended conditions. Products are sometimes shipped at a temperature that differs from the recommended storage temperature. Short-term storage of many products are stable in the short-term at temperatures that differ from that required for long-term storage. We ensure that the product is shipped under conditions that will maintain the quality of the reagents. Upon receipt of the product, follow the storage recommendations on the product data sheet.

APExBIO Technology

www.apexbt.com

7505 Fannin street, Suite 410, Houston, TX 77054.

Tel: +1-832-696-8203 | Fax: +1-832-641-3177 | Email: info@apexbt.com

