

## Certificate of Analysis

<b>Product Name:</b>	H-Glu-2-Chlorotrityl Resin
<b>Cat. No.:</b>	A6810
<b>Batch No.:</b>	1

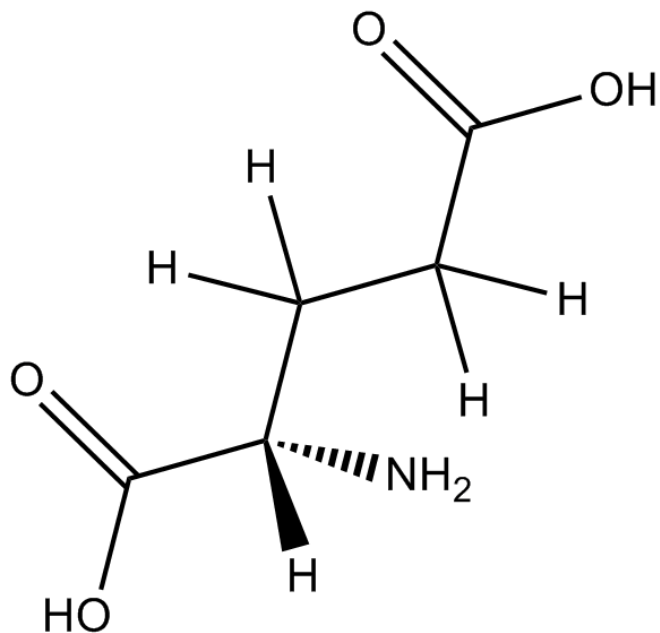
### Physical and Chemical Properties

<b>Batch Molecular Formula:</b>	100-200:mesh,1%DVB
<b>Batch Molecular Weight:</b>	0.3-0.8mmol/g
<b>Purity:</b>	>98%
<b>Cas No.:</b>	N/A

### Analytical Data

<b>HPLC:</b>	Shows Min 98% purity
<b>Mass Spectrum:</b>	Consistent with structure

### Structure



Caution

**FOR RESEARCH PURPOSES ONLY.**

**NOT FOR HUMAN, VETERINARY DIAGNOSTIC OR THERAPEUTIC USE.**

**APEX BIO Technology**

**[www.apexbt.com](http://www.apexbt.com)**

7505 Fannin Street, Suite 410, Houston, TX 77054.

Tel: +1-832-696-8203 | Fax: +1-832-641-3177 | Email: [info@apexbt.com](mailto:info@apexbt.com)