

High Performance Liquid Chromatography

Analysis Information

Product Name: Chlorpheniramine Maleate
Operator: David
Injection Date: 4/5/2019 5:45:07 AM
Batch No.: 2

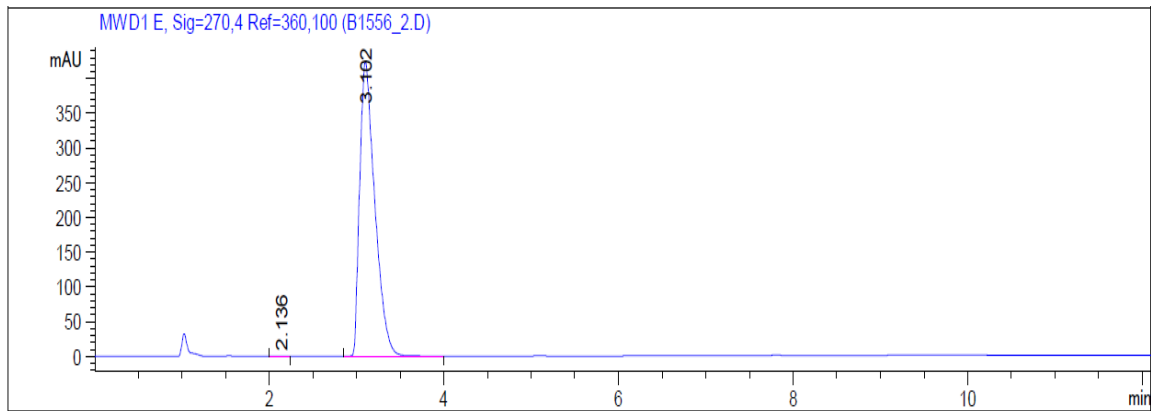
HPLC Condition

Column : ZORBAX Eclipse Pluse C18 3.5 μ m 4.6mmx100mm
Solvent A: H2O+1‰ TFA
Solvent B: ACN+1‰ TFA
Gradient:

| Time | A | B |
|---------|------|------|
| 0.0min | 80% | 20% |
| 2.0min | 80% | 20% |
| 7.0min | 5% | 95% |
| 10.0min | 0% | 100% |
| 12.0min | 0% | 100% |
| 12.1min | 80% | 20% |
| 15.0min | Stop | Stop |

Flow rate: 1ml/min
Wavelength: 270nm
Volume: 5 μ l

Result



| Rank | RetTime(min) | Area(mAU*s) | Area % |
|------|--------------|-------------|---------|
| 1 | 2.136 | 7.44820e-1 | 0.0146 |
| 2 | 3.102 | 5104.14063 | 99.9854 |

Caution

FOR RESEARCH PURPOSES ONLY.

NOT FOR HUMAN, VETERINARY DIAGNOSTIC OR THERAPEUTIC USE.

APEX BIO Technology

www.apexbt.com

7505 Fannin street, Suite 410, Houston, TX 77054.

Tel: +1-832-696-8203 | Fax: +1-832-641-3177 | Email: info@apexbt.com