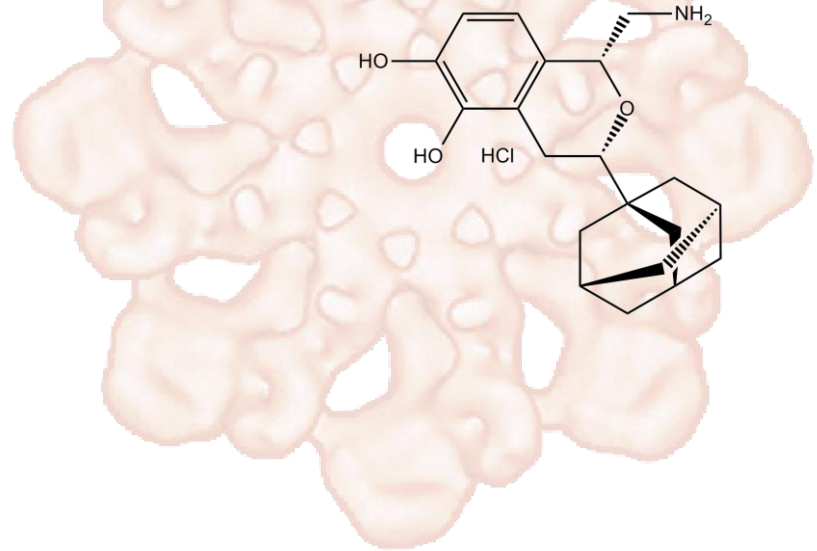


Product Data Sheet

A 77636 hydrochloride

Cat. No.:	B6837
CAS No.:	145307-34-2
Formula:	C ₂₀ H ₂₇ NO ₃ ·HCl
M.Wt:	365.9
Synonyms:	
Target:	Neuroscience
Pathway:	Dopamine Receptor
Storage:	Store at -20°C



Solvent & Solubility

 Soluble in H₂O

In Vitro

Preparing Stock Solutions	Solvent Concentration	Mass	1mg	5mg	10mg
		1 mM	2.7330 mL	13.6649 mL	27.3299 mL
	5 mM	0.5466 mL	2.7330 mL	5.4660 mL	
	10 mM	0.2733 mL	1.3665 mL	2.7330 mL	

Please refer to the solubility information to select the appropriate solvent.

Biological Activity

Shortsummary

Agonist of D1-like dopamine receptor, potent and selective

 IC₅₀ & Target

In Vitro

Cell Viability Assay

Preparation method:

In Vivo

Animal experiment

Applications:

Product Citations

See more customer validations on www.apexbt.com.

References

Caution

FOR RESEARCH PURPOSES ONLY.

NOT FOR HUMAN, VETERINARY DIAGNOSTIC OR THERAPEUTIC USE.

Specific storage and handling information for each product is indicated on the product datasheet. Most APEX BIO products are stable under the recommended conditions. Products are sometimes shipped at a temperature that differs from the recommended storage temperature. Shortterm storage of many products are stable in the short-term at temperatures that differ from that required for long-term storage. We ensure that the product is shipped under conditions that will maintain the quality of the reagents. Upon receipt of the product, follow the storage recommendations on the product data sheet.

APEX BIO Technology

www.apexbt.com

7505 Fannin street, Suite 410, Houston, TX 77054.

Tel: +1-832-696-8203 | Fax: +1-832-641-3177 | Email: info@apexbt.com

