

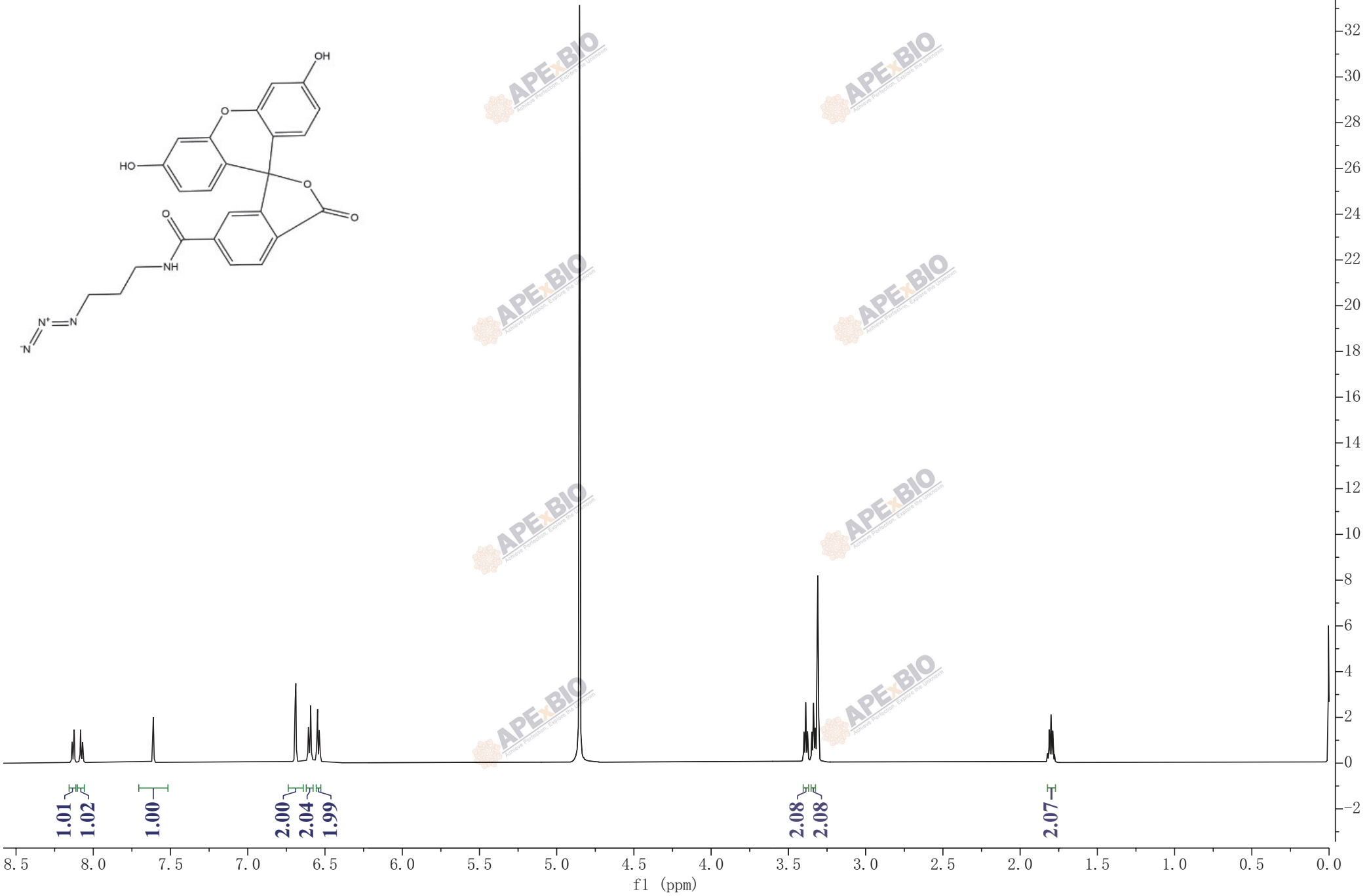
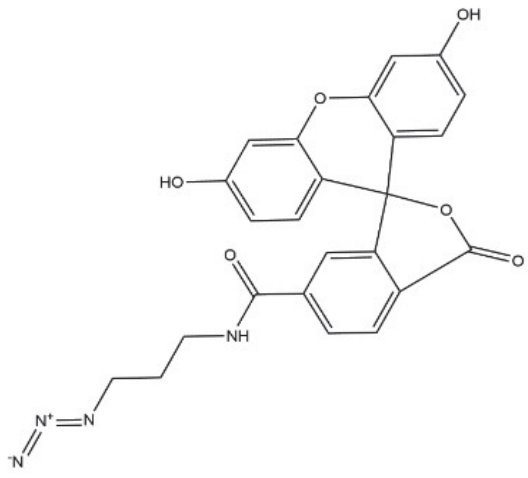
8.14
8.13
8.12
8.08
8.07

6.69
6.69
6.61
6.59
6.55
6.55
6.54
6.53

4.85
4.83

3.40
3.39
3.38
3.35
3.34
3.33
3.32
3.31
3.31
3.31
3.30

1.82
1.81
1.80
1.79
1.78



1.01
1.02
1.00

2.00
2.04
1.99

2.08
2.08

2.07

f1 (ppm)