

Certificate of Analysis

Product Name: Sitagliptin (phosphate)

Cat. No.: C3966

Batch No.: 2

Physical and Chemical Properties

Batch Molecular Formula: C₁₆H₁₅F₆N₅O·H₃PO₄

Batch Molecular Weight: 505.3

Purity: >99%

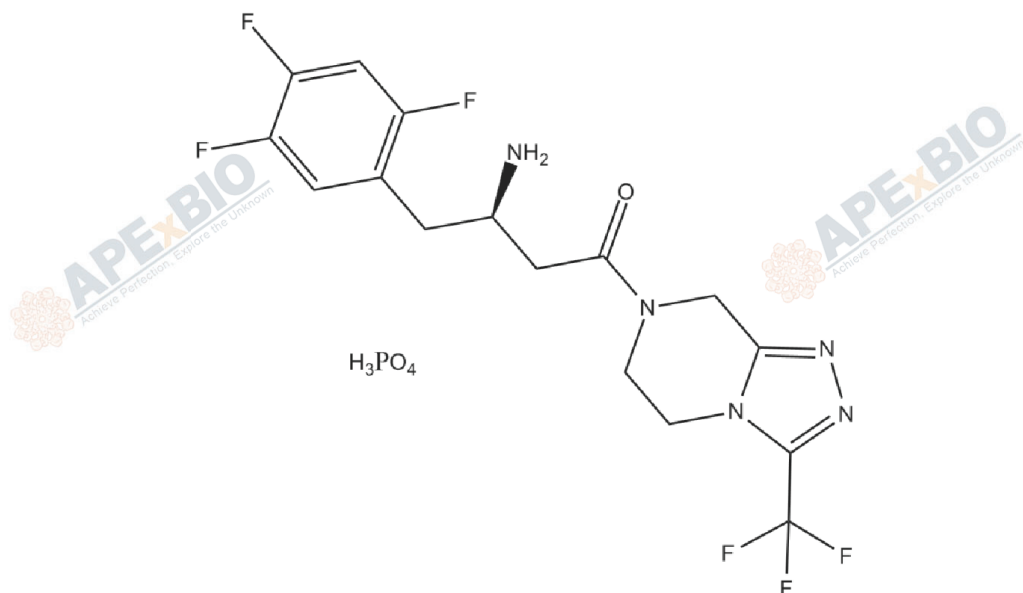
Cas No.: 654671-78-0

Analytical Data

HPLC: HPLC

Mass Spectrum: Consistent with structure

Structure



Caution

FOR RESEARCH PURPOSES ONLY.

NOT FOR HUMAN, VETERINARY DIAGNOSTIC OR THERAPEUTIC USE.



APEX BIO Technology



www.apexbt.com

7505 Fannin street, Suite 410, Houston, TX 77054.

Tel: +1-832-696-8203 | Fax: +1-832-641-3177 | Email: info@apexbt.com

