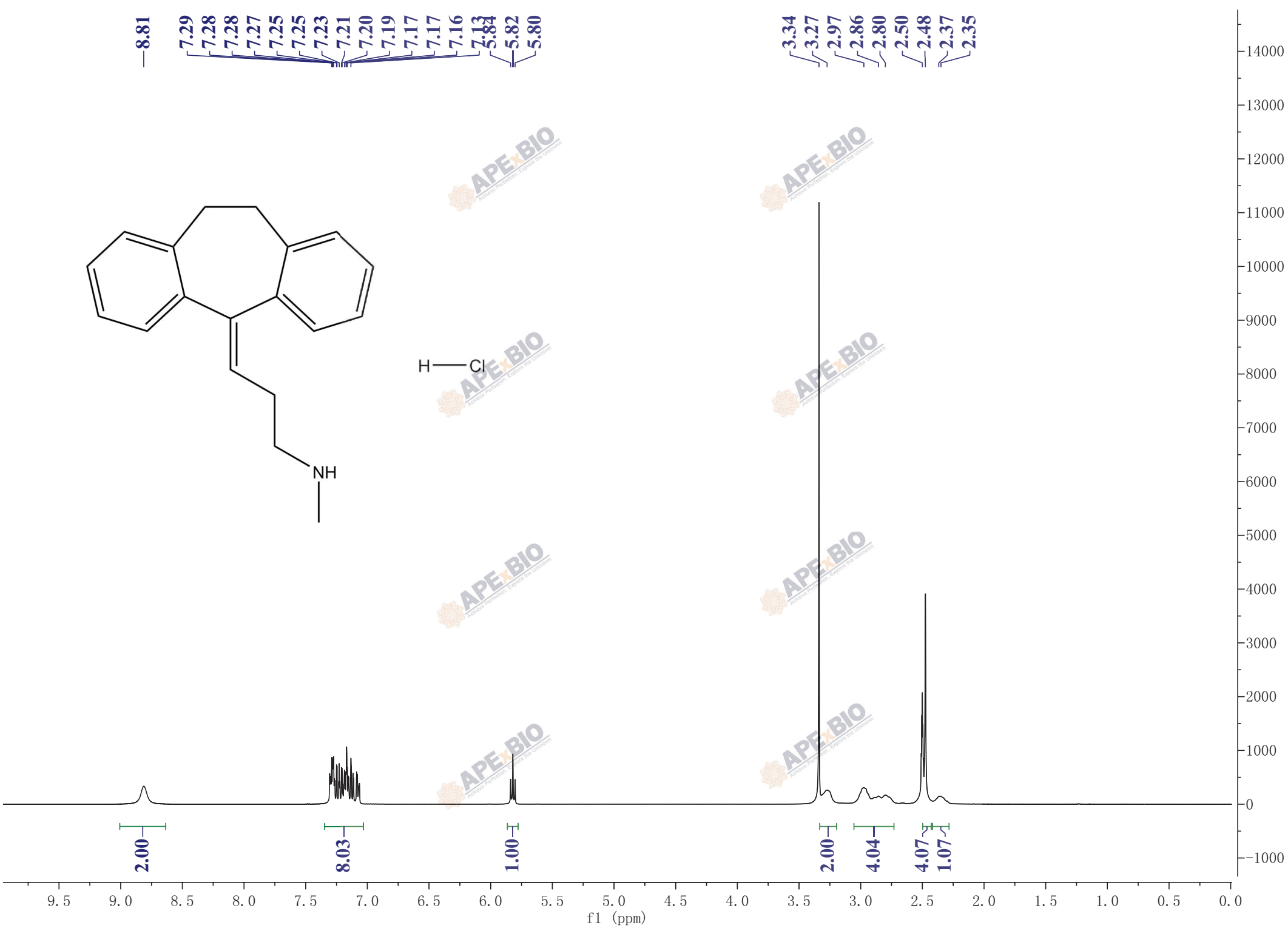


8.81
7.29
7.28
7.28
7.27
7.25
7.25
7.23
7.21
7.20
7.19
7.17
7.17
7.16
7.13
5.84
5.82
5.80

3.34
3.27
2.97
2.86
2.80
2.50
2.48
2.37
2.35

H—Cl



2.00

8.03

1.00

2.00

4.04

4.07

1.07

f1 (ppm)