

## Certificate of Analysis

Product Name: Trans-Anethole

Cat. No.: C6751

Batch No.: 1

### Physical and Chemical Properties

Batch Molecular Formula: C<sub>10</sub>H<sub>12</sub>O

Batch Molecular Weight: 148.2

Purity: >98%

Cas No.: 4180-23-8

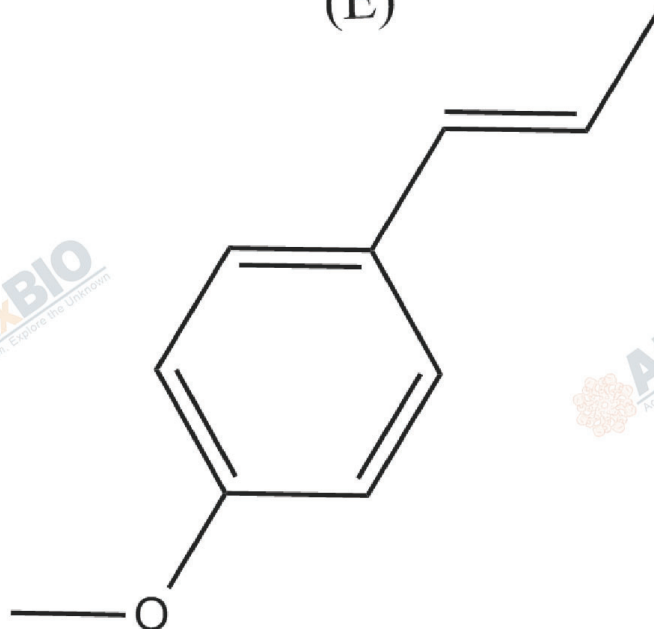
### Analytical Data

HPLC: HPLC

Mass Spectrum: Consistent with structure

### Structure

(E)



## Caution

**FOR RESEARCH PURPOSES ONLY.**

**NOT FOR HUMAN, VETERINARY DIAGNOSTIC OR THERAPEUTIC USE.**

**APEX BIO Technology**

**[www.apexbt.com](http://www.apexbt.com)**

7505 Fannin street, Suite 410, Houston, TX 77054.

Tel: +1-832-696-8203 | Fax: +1-832-641-3177 | Email: [info@apexbt.com](mailto:info@apexbt.com)