

Mass Spectrometry

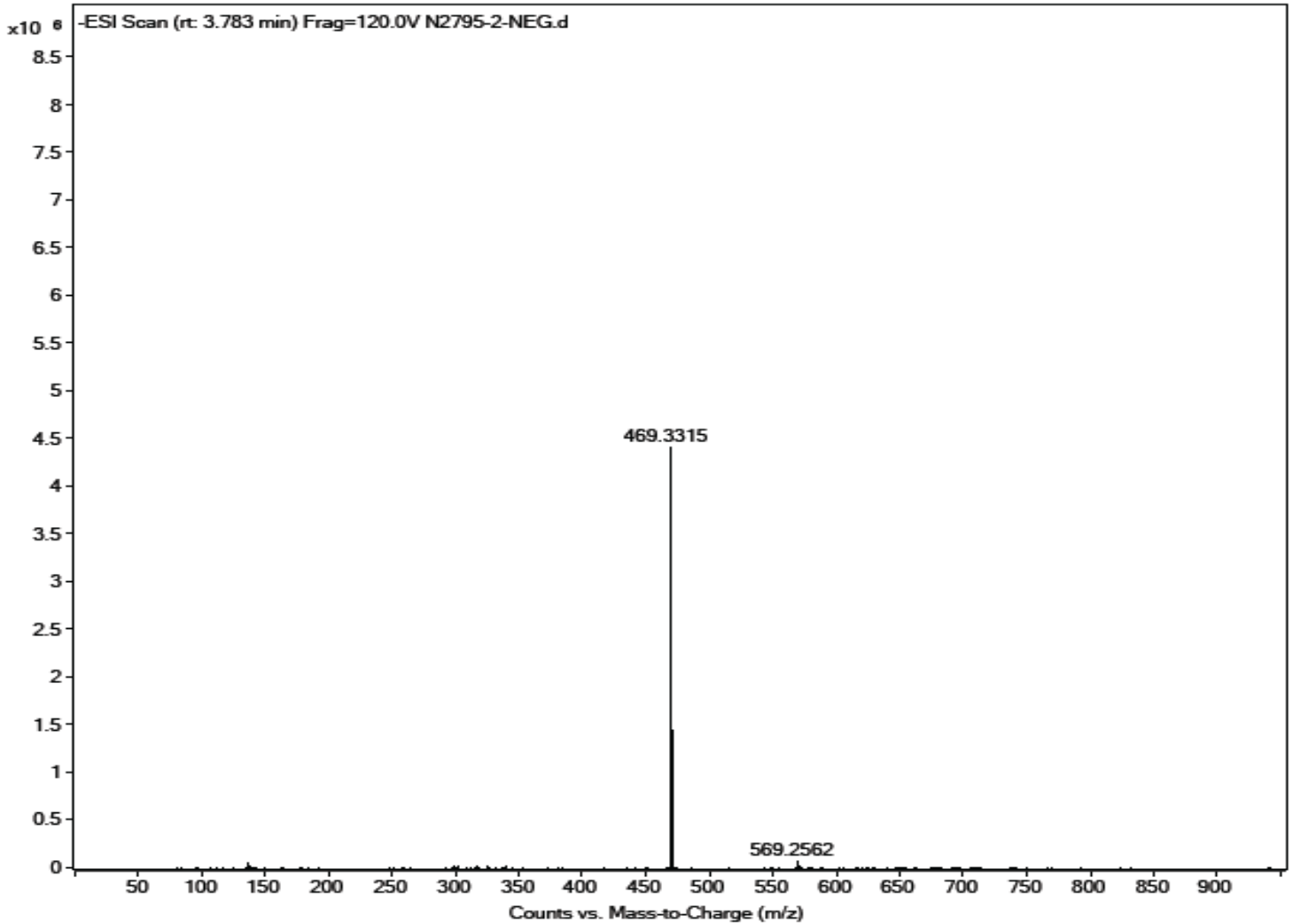
Analysis Information

| | |
|------------------------|----------------------|
| Product Name: | Glycyrrhetic acid |
| Operator: | David |
| Injection Date: | 2/17/2020 5:43:48 PM |
| Inj. Volume: | 1 |
| Batch No.: | 2 |

Acquisition Parameter

| | |
|--------------------|----------------------------|
| Probe: | ESI |
| Gas Temp: | 350°C |
| Gas Flow: | 11L/min |
| Nebulizer: | 50psi |
| VCap: | 4000v |
| Fragmentor: | 70v |
| Reference: | m/z 121.050873, 922.009798 |
| T.Flow: | 0.3ml/min |
| B.conc: | 20%H2O/80%ACN |

Result



Molecular Weight: 470.69

m/z([M-H]⁻) Base Peak: 469.3315

Caution

FOR RESEARCH PURPOSES ONLY.

NOT FOR HUMAN, VETERINARY DIAGNOSTIC OR THERAPEUTIC USE.

APEX BIO Technology

www.apexbt.com

7505 Fannin street, Suite 410, Houston, TX 77054.

Tel: +1-832-696-8203 | Fax: +1-832-641-3177 | Email: info@apexbt.com